

CATALOGUE 2022

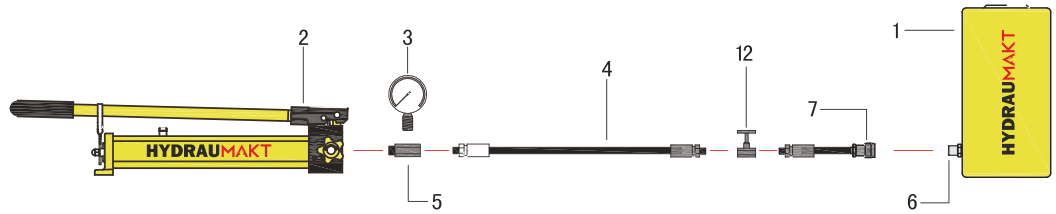


# HYDRAUMAKT

*High Pressure Hydraulic Tools & Equipments*

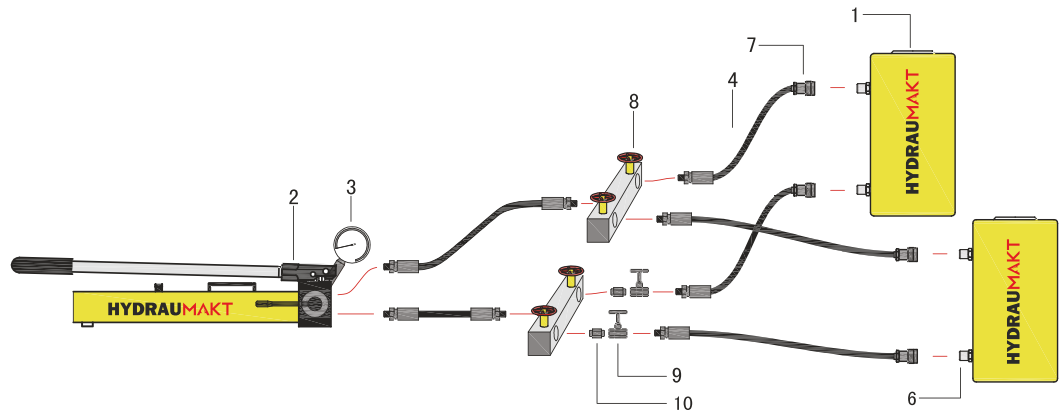
[www.hydraumakt.com](http://www.hydraumakt.com)

# HYDRAUMAKT CYLINDER SET-UPS



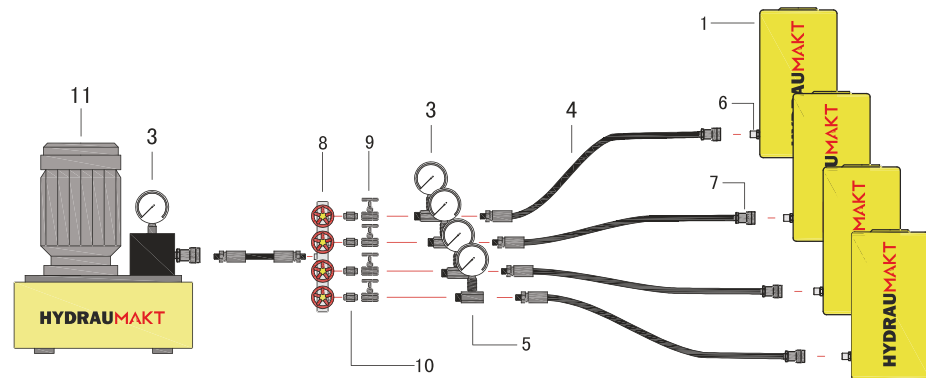
## Set-up one: One-way hand pump+Hose+Single acting hydraulic cylinder

It is the basic system set-up. The oil reservoir of pump must be larger than the oil capacity of cylinder, so as to offer full cylinder stroke.



## Set-up two: Two-way hand pump + Two manifolds + Six hoses + Two double acting hydraulic cylinders

With 2- or more-port manifold, the system allows simultaneous lift and descent of several double acting cylinders. Throttle valve installed on the outlet port of manifold regulates the flow of hydraulic fluid to or from the cylinders, so as to control the lift and descent of each cylinder and maintain horizontal movement of load.



## Set-up Three: One-way electric pump + Manifold + Five hoses + Four single acting cylinder

With 4- or more- port manifold, the system allow simultaneous lift of several single acting cylinders. Throttle valve regulates the flow of hydraulic fluid to or from the cylinders. One- way valve allows safety holding of load in lifting applications.

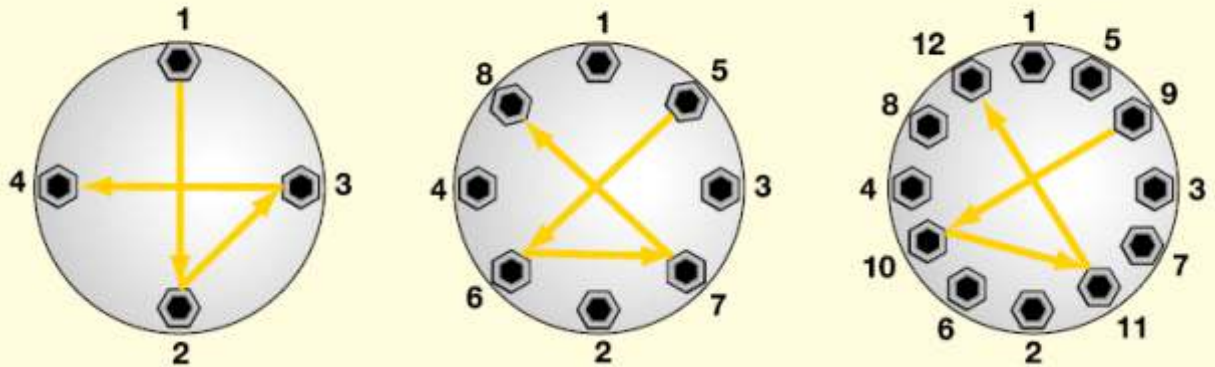
- |                   |                          |
|-------------------|--------------------------|
| 1. Cylinder       | 7. Male coupler          |
| 2. Hand pump      | 8. Manifold              |
| 3. Pressure gauge | 9. Throttle valve        |
| 4. Hose           | 10. Connector            |
| 5. Gauge adaptor  | 11. Electric pump        |
| 6. Female coupler | 12. Safety holding valve |

# TORQUE SEQUENCE

## "Torque Procedure

When torquing it is common to tighten only one bolt at a time, which can result in Point Loading and Load Scatter. To avoid this, torque is applied in stages following a prescribed pattern:"

### Torque Sequence



#### Step 1

Spanner tight ensuring that 2 - 3 threads extend above nut.

#### Step 2

Tighten each bolt to one-third of the final required torque following the pattern as shown above.

#### Step 3

Increase the torque to two-thirds following the pattern shown above.

#### Step 4

Increase the torque to full torque following the pattern shown above.

#### Step 5

Perform one final pass on each bolt working clockwise from bolt 1, at the full final torque.

Torque Unit	
1 Nm = 0.7376Ft.lbs	Ft.lbs = 1.3558 Nm
1 Nm = 8.08507Ft.in	Ft.in = 0.1130 Nm
1 Nm = 0.1019Kgf.m	Kgf.m = 9.8068Nm
1 Nm = 10.1970Kgf.cm	Kgf.cm = 0.981Nm

Pressure	
1 psi = 0.069 bar	1 bar = 14.50 psi
	= 9.8 N/cm <sup>3</sup>
	= 100000 Pa

Other Measurement
1 hp = 0.746 kW
1 kW = 1.35 hp
1 kN = 225 Lbs
1 inch = 25.4 mm
Temperature
T <sup>o</sup> convert °C to °F
T <sup>o</sup> F = (T <sup>o</sup> C x 1.8) + 32

Volume Conversion
1 in <sup>3</sup> = 16.387 cm <sup>3</sup>
1 cm <sup>3</sup> = 0.061 in <sup>3</sup>
1 litre = 61.02 in <sup>3</sup>
= 0.264 gal
1 gallon = 3.78 Litr

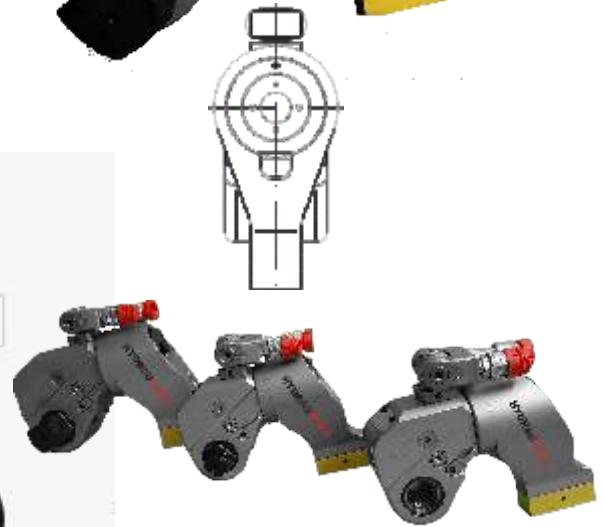
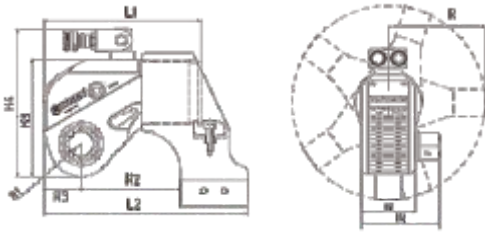
Weigt Conversion
1 Lb = 0.4536 Kg
1 Kg = 2.205 Lbs
1 Ton = 2205 Lbs
= 1000 kg
1 US Ton = 2000 Lbs

## HSQ Series

### Features

- Lock ring couplers comes a standard fitting.
- Accuracy of  $\pm 3\%$  enhances the perfection of work done.
- Curved nose radius along with 360 rotatable coupler/hose connections allow easier positioning and workability in confined areas.
- Push Button drive for tightening and/or loosening.
- Light Weight titanium alloy makes the tool so light that a single operator can do the entire job with ease.
- Double acting system ensures that the work completes much faster than the conventional torque wrenches.
- 360 Rotatable , 60 point adjustable reaction arm helps in using the tool in any direction /position.
- Durable corrosion resistant coating gives the tool longer life.

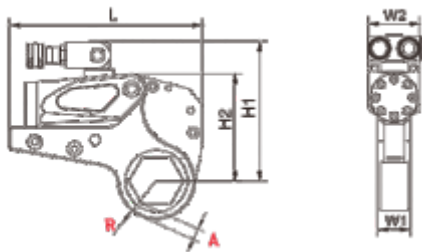
## SQUARE DRIVE HYDRAULIC TORQUE WRENCH



Type	07HSQ	1HSQ	3HSQ	5HSQ	8HSQ	10HSQ	20HSQ	25HSQ
Torque (N.M)	112-1120	183-1837	451-4512	752-7528	1078-10780	1551-15516	2666-26664	3472-34725
Sq. Drive	3/4"	3/4"	1"	1 <sup>1/2</sup> "	1 <sup>1/2</sup> "	1 <sup>1/2</sup> "	2 <sup>1/2</sup> "	2 <sup>1/2</sup> "
Weight (Kg)	1.8	2.5	5	8	11	15	26.5	35
L1	110.8	144.5	178	210.5	222	245.5	307.5	323
L2	139.3	173.5	229	270.5	293	317.5	383.5	401
H1	42	50	68	80	90	100	120	137
H2	65.8	72	95	123	134	142	183	200
H3	76.2	96	127	149	167	182	220	247
H4	108.1	131	176.5	199	217	232	270	297

## HHX Series

### HEXAGONAL CASSETTE TORQUE WRENCH



#### Features

- Lock ring couplers comes as standard fitting.
- Accuracy of  $\pm 3\%$  enhances the perfection of work done.
- Curved nose radius along with 360 rotatable coupler/hose connections allow easier positioning and workability in confined areas.
- Interchangeable cassettes gives you the economy of using one tool for various sizes of nuts/bolts , just snap it and use it.
- Light Weight titanium alloy makes the tool so light that a single operator can do the entire job with ease.
- Double acting system ensures that the work completes much faster than the conventional torque wrenches.
- Integrated reaction arm and few moving part gives the tool longer life.

Model	Torque Range (NM)	Bolt Size (mm)	Drive Unit Weight (Kg)	Hex Cassette Weight Kg.	Dimension (mm)				
					L	H1	H2	W1	W2
2-HHX	223-2328	19-55	1	1.6	198.4	125.9	102.3	32	51
	241-2414	60	1	1.7	196.4	128.5	105	32	51
4-HHX	585-5858	34-65	2	4.4	245	177	135.7	42	66
	647-6474	70-80	2	4.6	246	187	145.7	42	66
8-HHX	1094-10941	41-95	3.3	8	300	207	169	53	83
	1177-11774	100-105	3.3	8.4	301	216	178	53	83
14-HHX	1852-18521	50-117	5.5	11.6	361	239	204	64	99
30-HHX	4188-41882	110-155	11.4	29	430	303	272	85	131
	4459-44593	160-175	11.4	30	441	315	285	85	131

## HEPW Series

Model No.	Max. Pressure (Bar)	Flow (L/M/H) L/Min	Voltage (V)	Remote Cord (Mtr.)	Weight (Kg)
HEPW-4000	700	7-1.6-0.8	220v/1ph.	6	26.7

## TORQUE WRENCH ELECTRIC PUMP

### Features

- High power two speed portable torque wrench powerpack.
- Suitably located oil fill port makes it easy for operator to top up oil.
- Adjustable pressure regulator makes it convenient to set desired torque.
- Equipped with heavy duty rolled cage bars for easy portability.
- Rugged design for severe conditions.
- Quick release couplers and dust caps are standard on all models.
- Powerpack to operate upto 4 tools are also available on request.
- Option of oil cooler for longer duty cycle.



## TORQUE WRENCH AIR PUMPS

### Features

- Use where air is the preferred source of power.
- Powerfull 3HP motor starts under full load.
- Adjustable pressure regulator makes it convenient to set desired torque.
- Retract side internal relief valve protects tool from over pressurization.

Model No.	Max. Pressure (Bar)	Flow (L/M/H) L/Min	Air Pressure (bar)	Remote Cord (Mtr.)	Weight (Kg)
HAPW - 5000	700	7-1.6-0.8	4-8	6	20.5

## HAPW Series



## TORQUE WRENCH TWIN HOSES

Model	Max. Pressure (Bar)	ID (mm)	Length (mtrs)
HTH -20	700	9.5	6
HTH-30	700	9.5	9
HTH -50	700	9.5	15



## HTL Series

### ELECTRIC TORQUE WRENCH

#### Features

- Small volume, light weight suitable for high altitude and narrow space work.
- Digital torque control & display.
- High repeated accuracy & stability.
- Easy to carry strong plastic moulded box.



Model	Voltage	Current	Power	Torque Range	Freq	Square Drive	RO Speed	Weight (Main Body)
HTL-3B	230V 115V	6A 12A	1300W	100-300	50-60 Hz	19*19 mm (3/4" *3/4")	24 rpm	4.4 kgs
HTL-5B	230V 115V	7A 14A	1650W	200-500	50-60 Hz	19*19 mm (3/4" *3/4")	15.5 rpm	4.5 kgs
HTL-9B	230V 115V	7A 14A	1650W	400-900	50-60 Hz	25.4*25.4mm (1"*1")	9.5 rpm	5.3 kgs
HTL-7LP	230V 115V	8A 16A	1800W	350-700	50-60 Hz	25.4*25.4mm (1"*1")	15 rpm	4.7 kgs
HTL-12LP	230V 115V	8A 16A	1800W	500-1200	50-60 Hz	25.4*25.4mm (1"*1")	9 rpm	5.5 kgs
HTL-21LP	230V 115V	8A 16A	1800W	900-2100	50-60 Hz	25.4*25.4mm (1"*1")	6 rpm	6.6 kgs
HTL-35G	230V 115V	12A 24A	2800W	1700-3500	50-60 Hz	38*38mm (1-1/2"*1-1/2"mm)	2.5 rpm	12 kgs
HTL-60G	230V 115V	12A 24A	2800W	2000-6000	50-60 Hz	38*38mm (1-1/2"*1-1/2"mm)	0.6 rpm	18.5 kgs
HTL-100G	230V 115V	12A 24A	2800W	5000-10000	50-60 Hz	38*38mm (1-1/2"*1-1/2"mm)	0.3 rpm	21 kgs

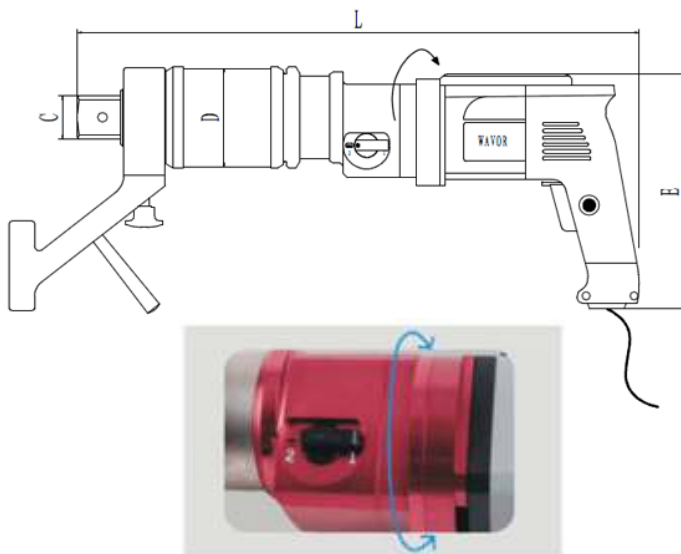
## HTD-S Series

### Features

- Pump and hose are no longer needed. To do precise bolting process, it only requires power supply of 220-240V 50-60Hz
- Continuous rotation without impact. When reaching the preset torque, it will stop automatically. More functional than hydraulic wrench by intermittent drive.
- Single-Chip Intelligent torque control system, with fault self-checking function and power-off memory function. Accuracy :±5%
- Human Computer Interface. Torque value is shown directly on LCD display 'Torque Table' is not needed.
- Double Anti-Overload protection. Electronic System against over-tighten and the clutch against overload, they can protect rotating component effectively.

## DIGITAL ELECTRIC TORQUE WRENCH STRAIGHT TYPE

*Portable, Easy to use and Hassle Free*



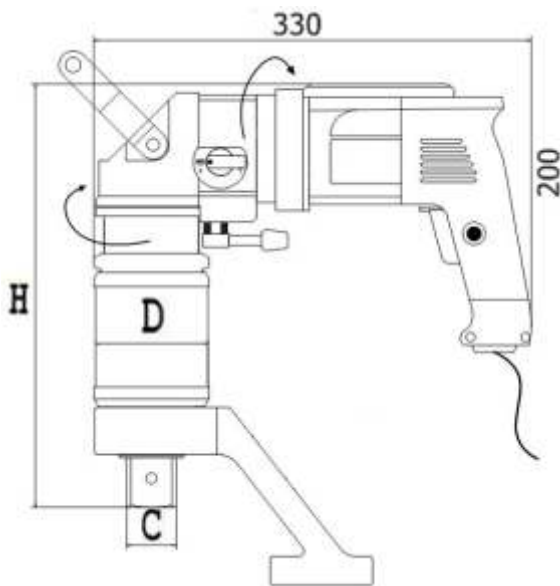
Model	Min torque (Nm)	Max-Torque (Nm)	Square Drive Size C (mm)	D (mm)	L (mm)	Width E (mm)	Weight (Kg)
HTD-06S	100	600	3/4"	88	432	208	6.6
HTD-08S	100	800	3/4"	88	432	208	6.7
HTD-12S	200	1200	1"	88	439	208	6.8
HTD-26S	400	2600	1"	88	486	208	8.6
HTD-38S	500	3800	1 1/2"	88	496	208	9.2
HTD-60S	1000	6000	1 1/2"	129	525	208	16
HTD-80S	1200	8000	1 1/2"	129	558	208	18
HTD-100S	1800	10000	1 1/2"	129	558	208	18.2
HTD-120S	2000	12000	1 1/2"	129	558	208	18.4



## HTD-A Series

### DIGITAL ELECTRIC TORQUE WRENCH ANGLED TYPE

Digital Display Torque System



### Features

- Pump and hose are no longer needed. To do precise bolting process, it only requires power supply of 220-240V,50-60Hz
- Compared to straight type, the angled is more suitable for limited working space.
- Precise planet structure, high torque/weight ratio, low noise, strong and durable, no leakage and easy maintenance.
- Double Speed design, high/low Speed can be Shifted freely.
- Special design of one-piece reaction arm, it's much better on strength and using life than casting and weld pieces. Adjustable by 360-degree.
- Pistol handle of human engineering. Its cushion rubber can reduce 50% of the vibration. Free connection of power handle and drive units, it can rotate in reverse.
- Industrial grade design for continuous using. It can meet the needs of production assembly, engineering installation and maintenance.



Model	Min torque (Nm)	Max-Torque (Nm)	Square Drive Size C (mm)	D (mm)	L (mm)	Width E (mm)	Weight (Kg)
HTD-06A	100	600	3/4"	88	339	252	7.8
HTD-08A	100	800	3/4"	88	339	252	7.9
HTD-12A	200	1200	1"	88	339	259	8
HTD-26A	400	2600	1"	88	339	306	9.8
HTD-38A	500	3800	1 1/2"	88	339	316	10.4
HTD-60A	1000	6000	1 1/2"	129	339	345	17.2
HTD-80A	1200	8000	1 1/2"	129	339	378	19.2
HTD-100A	1800	10000	1 1/2"	129	339	378	19.4
HTD-120A	2000	12000	1 1/2"	129	339	378	19.6

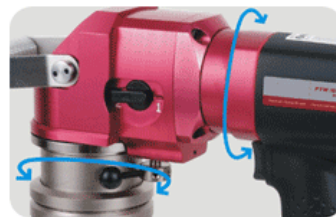
## HPT Series

### Features

- Air supply: 6 bar compressed air, max consumption is 600L/min
- Preset torque, output & repeat accuracy:  $\pm 5\%$  and  $\pm 3\%$
- Powerful & low noise, less than 80DbA under load
- More suitable for limited working space compared to the straight type
- With manual 2-speed gearbox, high/low speed can be shifted freely
- Equipped with brake system to protect the operator
- Supply scope: Air regulator, hose, quick coupling (air inlet connector of air regulator is excluded)

Model	Torque (Nm)	Square C	Free speed* (rpm)	Weight* (kg)
HPT-14A	200-1400	1"	22	7.9
HPT-29A	410-2900	1"	9	8.7
HPT-40A	560-4000	1-1/2"	7	10.4
HPT-62A	870-6200	1-1/2"	5	12.3
HPT-120A	1880-12000	1-1/2"	2	19.6

## PNEUMATIC TORQUE WRENCH - ANGLED & STRAIGHT



Model	Torque (Nm)	Square C	Free speed* (rpm)	Weight* (kg)
HPT-150S	45-180	1/2", 3/4"	42	6
HPT-500S	170-680	1/2", 3/4"	25	7
HPT-750S	250-1020	3/4", 1"	15	7
HPT-1000S	340-1400	3/4", 1"	9	7
HPT-2000S	750-3000	1", 1-1/2"	6	10
HPT-3000S	1010-4050	1", 1-1/2"	3	11
HPT-4000S	1350-5400	1-1/2"	2.5	13.6
HPT-5000S	1650-6500	1-1/2"	2	13.6
HPT-6000S	2200-8100	1-1/2"	1.5	13.6



## HPN Series

### PNEUMATIC IMPACT WRENCH



### Features

- Pistol type design with high torque output (Except HPN 762, 1062 & 1262 )
- The side handle for added comfortable & easy control.
- Adjustable forward / reverse regulator with 3 torque in forward and one full power setting in reverse.
- Fastest Way to tighten/loosen the bolt .
- Options of 6" & 8" Anvil in some models .
- Does not require Reaction arm thus turnaround & Setting time is fast.
- Lightweight , easy to handle
- Need Only Air to run .

Model	RPM FREE STAGE	AVERAGE AIR CONSUMPTION N 25% SCFM	MAX. TORQUE		SOUND (dBA) Pressure/ Power	Exhaust	Air Pressure		Air Inlet	Length		Weight (KG)
			Nm	Ft-Lb			Psi	Kg/Cm		mm	in	
<b>1/2" Sq Drive</b>												
HPN-1160	7,200	7.0	610	450	N/A	Front	90	6.3	1/4"	187	7.36	2.55
HPN-2360	7,500	8.0	1287	950	95.9/106.9	Handle	90	6.3	1/4"	198	7.8	2
<b>3/4" Sq Drive</b>												
HPN-761B	4,000	11.6	2031	1500	N/A	Side	90	6.3	3/8" or 1/2"	335	13.2	6.5
HPN-1161	4,500	6.4	1084	800	N/A	Handle & Front	90	6.3	1/4"	260	10.2	4.5
HPN-661	4,500	9.7	1490	1100	101.5/112.5	Handle	90	6.3	3/8"	240	9.5	3.8
<b>1" Sq Drive</b>												
HPN-262	3,500	11	2439	1800	N/A	Front	90-115	6.3-8	3/8" or 1/2"	280	11.00	9.00
HPN-762C	2,600	15	3388	2500	N/A	Side	90-115	6.3-8	3/8" or 1/2"	400	15.75	12.7
HPN-1262C	3,500	14.5	4472	3300	N/A	Side	90-115	6.3-8	3/8" or 1/2"	400	15.75	17
<b>1 1/2" Sq Drive</b>												
HPN-1062A	2,800	16	4472	3300	N/A	Side	90-115	6.3-8	1/2"	603	23.7	19.5

## HTM Series

### Features

- Heavy Duty rugged design
- Standard Non Ratcheting & ratchet models available.
- Use Torque Multiplier to achieve higher torque.

## MANUAL TORQUE WRENCH



MODEL		TECHNICAL SPECIFICATIONS				OAL at Min Capacity (mm)		Head Width (mm)		Weight (Kgs)	
Standard	Ratchet	Sq. drive	LB FT	N-M	Kg-Mts	Standard	Ratchet	Standard	Ratchet	Standard	Ratchet
HTM-10	HTM-10R	3/8"	2-10	3-14	0.3-1.4	315	345	25	36	0.5	0.65
HTM-25	HTM-25R	3/8"	5-25	5-35	0.5-3.5	340	375	25	36	0.6	0.70
HTM-50	HTM-50R	1/2"	10-50	14-68	1-7	460	495	30	42	1.0	1.10
HTM-100	HTM-100R	1/2"	20-100	25-135	3-14	560	590	32	48	1.60	1.90
HTM-160	HTM-160R	1/2"	40-160	50-220	5-23	580	600	32	48	2.20	2.50
HTM-250	HTM-250R	1/2"	50-250	70-340	7-35	785	810	32	48	2.80	3.00
HTM-400	HTM-400R	3/4"	100-400	135-540	14-56	1010	1080	48	72	6.20	7.30
HTM-500	HTM-500R	3/4"	100-500	135-675	14-170	1060	1130	48	72	6.20	7.30
HTM-600	HTM-600R	3/4"	145-605	200-315	20-84	1060	1130	48	72	6.20	7.30
HTM-750	HTM-750R	3/4"	350-750	457-1015	49-105	1250	1320	56	79	11.3	13.70
HTM-1000	HTM-1000R	1"	400-1000	540-1380	55-140	1300	1400	70	100	13.6	17.60
HTM-1400	HTM-1400R	1"	750-1400	1000-1900	105-195	1420	1520	70	100	15.0	20.00
HTM-2000	HTM-2000R	1"	1000-2000	1350-2700	135-275	1510	1615	70	100	20.0	22.10
HTM-2000	HTM-2500R	1"	1500-2500	2030-3430	207-347	1620	1720	70	100	21.5	25.00

## MANUAL TORQUE MULTIPLIER

## HMT Series

### Features

- Accuracy better than  $\pm 4\%$ .
- Precision tightening and loosening of all heavy duty fasteners.
- Low energy input with high torque transfer.
- Higher capacity multipliers are furnished with strong ratchets (Anti-wind up mechanism) allowing jobs to be performed easily, efficiently, and safely.
- Precision Manufacturing ensures long life and premier quality.
- A groove on output Square breaks if over loaded in excess of 20% of its capacity.
- Highest possible load factor is guaranteed due to design and use of forged components.



Model No.	Capacity		Ratio	Square Drive (Inch)		A	B	C		Weight*
	N.m	lbf.ft		Input	Output	ø	mm	mm	min	
						mm	mm	mm	mm	kg
HMT-6	3400	2500	5	3/4	1.1/2	116	158	105	260	9.2
HMT-6/25	3400	2500	25	1/2	1.1/2	116	211	105	260	12
HMT-7	6000	4500	5	3/4	1.1/2	142	171	115	310	18
HMT-7/25	6000	4500	25	1/2	1.1/2	142	230	115	310	22
Fitted with AWUR										
HMT-9/25	9500	7000	25	3/4	1.1/2	196	243	150	350	33
Fitted with AWUR										
HMT-9/125	9500	7000	125	1/2	1.1/2	196	325	150	350	35.5
Fitted with AWUR										
HMT-11/25	17000	12500	25	3/4	2.1/2	220	355	164	480	52
Fitted with AWUR										
HMT-11/125	17000	12500	125	1/2	2.1/2	220	404	164	480	57
Fitted with AWUR										
HMT-13/125	47500	35000	125	3/4	2.1/2	315	550	164	480	80
Fitted with AWUR										

## HNS Series

### SELF CONTAINED HYDRAULIC NUT SPLITTERS

#### Features

- Unique Angled head design.
- Heavy Duty cutting head made of special Steel.
- Rugged and durable.
- Easy and simple operation.
- Comes in Plastic Carry Case.

Model	Output force (ton)	Bolt Range (mm)	Hexagonal Nut Range (mm)	G.W (Kg)
HNS-24	14	M8-M24	14-36	7
HNS-27	20	M22-M27	32-41	6.8



### HYDRAULIC NUT SPLITTERS



#### Features

- Compact and ergonomic design, easy to use,
- Unique angled head design.
- Heavy Duty cutting head made of special Steel.
- Sing Acting, Spring return .
- Supplied with R2 3/8 female Coupler and dust cap.
- Operated by Hydraulic Pump with rated pressure of 700 Bar.
- Optional blades can be ordered as spare.

Model	Output force (ton)	Bolt Range (mm)	Hexagonal Nut Range (mm)	G.W (Kg)
HNS-24B	14	M8-M24	14-36	3.3
HNS-1319	5	M6-M12	10-19	1.6
HNS-1924	10	M12-M16	19-24	2.4
HNS-2432	15	M16-M22	24-32	4.1
HNS-3241	20	M22-M27	32-41	5.6
HNS-4150	35	M27-M33	41-50	10
HNS-5060	50	M33-M39	50-60	14
HNS-6070	90	M39-M48	60-75	36

## HWS Series

### Features

- Manual Hydraulic Operation
- Use Stepped Blocks to increase Wedge Opening up to 81 mm
- Safe and Reliable Hydraulic System
- Operated by Hydraulic Pump with rated Pressure of 700 bar

## HYDRAULIC WEDGE SPREADER



Model	Max. Spreading Force (Ton)	Tip Clearance (mm)	Max. Spread (mm)	Type	Oil Capacity (Cm <sup>3</sup> )	G. W (Kg)
HWS-8	8	6	77	Mechanical Type	-	10.4
HWS-10	10	6	81	Hydraulic Type	70	11.5
HWS-1481	14	6	81	Hydraulic Type	70	10.2

## HFS Series

## HYDRAULIC FLANGE SPREADERS

### Features

- Light Weight, Ergonomic design for ease of use.
- Adjustable Jaw Widths from 70 to 216 mm for a wide range of Applications.
- S/A, Spring Return
- Operated by Hydraulic Pump with rated Pressure of 700 Bar.

Model	Max. Flange Thickness (mm)	Stud Size (mm)	Standard Wedge (mm)	Output Force (ton)	Stroke (mm)	Gross Weight (Kg)
HFS-538	2 x 57	19-28	3-28	5	38	6
HFS-1054	2 x 92	31-41	3-28	10	54	13.2

ASA rating (Bar)	Pipe Size (mm)	
	HFS-538	HFS-1054
10	127-508	558-1066
20	63-355	406-711
27	63-304	355-609
35	63-254	304-508
62	12-152	203-406
103	12-088	101-203
172	12-063	76-101





Scan QR to  
download  
this catalogue

## Our Quality Policy



Each product is tested to the most excruciating standards.

Only this way we can ensure the un-interrupted performance of our products. Our High Quality product matched with the unbeatable enables us to cater to the requirements of the markets. We recognize that consistent satisfaction of customer needs is essential to business survival & we diligently work towards securing a long term partnership. ”

## Warranty Statement

*Each HYDRAUMAKT Product with the exception mentioned below are warranted against defects in workmanship and materials for the period of one year from the date of delivery to the buyer. The Warranty does not cover any product or part which is abused, heated, damaged, broken, worn out or otherwise altered or used in a manner inconsistent with the instructions or used for a purpose otherwise not intended for.*

*Electric motors , circuits , batteries , blades, cutters etc. supplied with Hydraumakt tools are not covered under this warranty .*

*For this warranty to take effect the costumer has to return the defective product to the Hydraumakt or its authorized Distributor on Freight Paid basis. If the Product is found to be defective by Hydraumakt as per the conditions stated above, the Hydraumakt shall repair or replace the product on its discretion and the same shall be returned on Freight Pre Paid basis.*

*The Warranty is limited to the Hydraumakt product and not extended beyond their product or any incidental ancillary.*

# HYDRAUMAKT

**HYDRAUMAKT HYDRAULICS INC**

16192 Coastal Highway  
Lewes, Delaware 19958 USA  
Email : [info@hydraumakt.com](mailto:info@hydraumakt.com)

Scan & Save  
our contact  
in your mobile



**Authorised Indian Distributor :**  
**Industrial Marketing & Services**

509, Ansal Majestic Tower, G Block  
Community Center, Vikaspuri,  
New Delhi -110018

T: +91 11 28543331, 41543331  
E: [info@imshydraulic.com](mailto:info@imshydraulic.com)